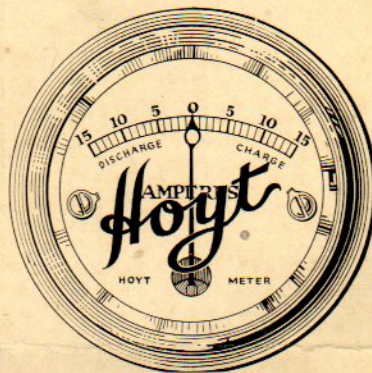


Hoyt Ammeters
for the

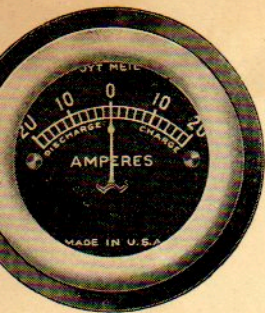
AUTOMOBILE
INSTRUMENT
BOARD



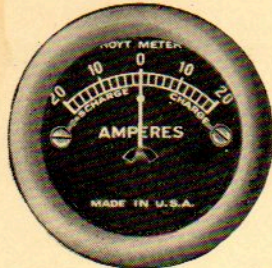
For All Popular Cars

HOYT ELECTRICAL INSTRUMENT WORKS
755 BOYLSTON STREET
BOSTON, MASSACHUSETTS

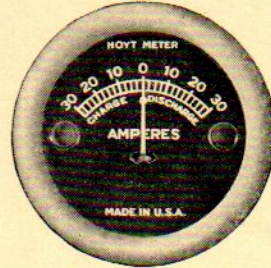
Effective January 1, 1930



No. 40

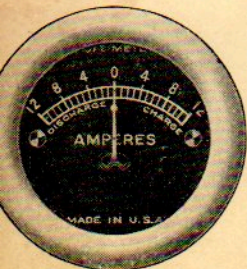


No. 41

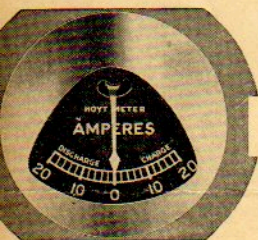


No. 42

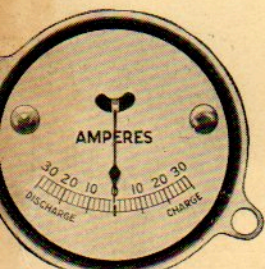
The Hoyt Electrical Instrument Works has developed these dash ammeters after long experience in the automotive field, best to fill the requirements of economical instrument board use. There are a minimum number of parts, and the moving system is the lightest possible, eliminating the need for strong magnetic control and mechanical damping. Ruggedly built—reasonably priced.



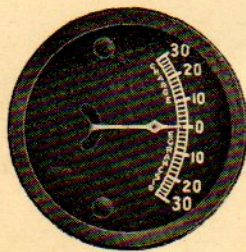
No. 46



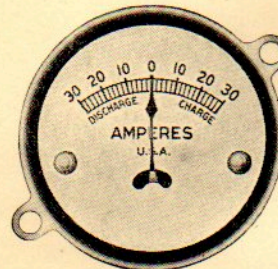
No. 47



No. 48

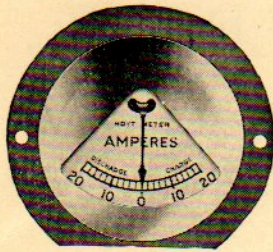


No. 49

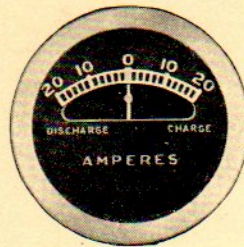


No. 50

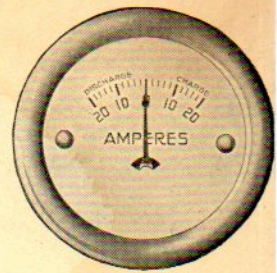
CAR	LIST AMMETER PRICE	CAR	LIST AMMETER PRICE
Anderson, '20	40	Gray, '23-'24	540 W.N. 1.25
Apperson, '20	41	G. M. C., '25-'27	540 W.N. 1.25
Auburn 4 and 6, '20-'22	40	G. M. C. Speedwagon, '28	47 .60
Auburn 4 and 6, '23-'24	40	Gramm, '20-'25	40 1.25
Auburn, '25-'29	Special	Gramm, '26-'27	42 1.25
Atlas, '20-'21	41	H. C. S., '20-'24	41 1.25
Austin, '20-'21	41	Handley-Knight, '20-'21	42 1.25
Allen, '20	41	Haynes, '20	40 1.25
Briscoe, '20	41	Haynes, '21-'24	42 1.25
Brockway, '27-'30	41	Hudson, '20-'26	42 1.25
Buick Std., '20-'21	41	Hudson, '27-'28	48 1.25
Open and Closed Models	540 W.N.	Hudson, '29	49 1.25
Buick Std., '22-'26	41	Hupmobile 4, '20	540 W.N. 1.25
Open and Closed Models	41	Hupmobile 4, '21-'25	42 1.25
Buick Master 6, '20-'21	540 W.N.	Hupmobile 8E, '25-'26	Special
Open and Closed Models	540 W.N.	Hupmobile, '27-'28	Special
Buick Master 6, '22	41	Indiana, '20-'28	540 W.N. 1.25
Open and Closed Models	41	Indiana, '26-'29	41 1.25
Buick Master 6, '24-'26	Special	Jackson, '20-'21	40 1.25
Buick, '27-'28	Special	Jewett, '23-'24	540 W.N. 1.25
Buick, '29	53 1.50	Jewett, '25	41 1.25
Buick, '30	53 1.50	Jordan 6, '20-'23	41 1.25
Cadillac, '20-'21	41	Jordan, '24-'29	Special
Cadillac, '25-'28	Special	Kearns, '20-'24	540 W.N. 1.25
Cadillac, '29	53 1.50	Kissel, '20-'24	41 1.25
Case, '20-'24	41	LaSalle, '29	53 1.50
Chandler, '20	40 1.25	Lexington, '20-'26	41 1.25
Chandler, '21-'23	41 1.25	Lincoln, '23-'27	42 1.25
Chandler, '24-'29	Special	Lincoln, '28-'29	Special
Chevrolet, '20-'24	40 1.25	Locomobile Jr. 8, '25	41 1.25
Chevrolet, '25-'27	47 .60	Luverne, '20-'27	42 1.25
Chevrolet, '28-'29	56 .60	Luxor Cab, '24-'27	42 1.25
Chrysler	Special	McFarlan, '24-'26	41 1.25
Cleveland, '20-'21	40 1.25	Marmon	Special
Cleveland, '22-'23	41 1.25	Maxwell, '20-'25	41 1.25
Cole, '20-'25	41 1.25	Mitchell, '20-'21	40 1.25
Commerce, '21-'26	540 W.N. 1.25	Nash Jr. 8, '20-'23	41 1.25
Columbia, '20-'23	41 1.25	Nash Standard, '29	52 1.25
Concord, '26-'27	41 1.25	Oakland, '20-'23	40 1.25
Curtis, '20-'21	40 1.25	Oakland, '24-'27	41 1.25
Denby, '20-'21	40 1.25	Oakland, '28-'29	49 1.25
Dodge, '24-'26	46 1.25	Oldsmobile, '20	40 1.25
Dodge, '27	45 1.25	Oldsmobile, '21-'23	41 1.25
Dodge, '28-'29	Special	Oldsmobile, '24-'30	Special
DuPont, '24-'25	42 1.25	Overland 4, '20	40 1.25
Durant, '20-'25	41 1.25	Overland 93, '24-'27	43 1.25
Economy, '18-'19	40 1.25	Overland Whippet 4 and 6, '26-'28	43 1.25
Elcar, '20-'21	40 1.25	Overland Whippet 4 and 6, '29	51 1.25
Elcar, '22-'25	42 1.25	Packard, '20-'23	41 1.25
Essex, '20-'26	42 1.25	Packard, '24-'30	Special
Essex, '27	48 1.25	Paige, '22-'24	41 1.25
Essex, '28-'29	50 1.25	Paige, '24-'27	Special
Federal, '20, '26-'28	540 W.N. 1.25	Peerless 72 and 90, '20-'23	41 1.25
Flint 60 and 80, '20-'25	41 1.25	Peerless, '24-'29	Special
Flint Jr., '26-'27	41 1.25	Pontiac, '26-'27	49 1.25
Ford, '22-'25, Model T	44-A .60	Pontiac, '28-'29	54 1.50
Ford, '26-'27, Model T	44 .50	Reo 6, '20-'26	41 1.25
Ford, '28, '29, '30, Model A	44 .50	Reo Flying Cloud	Special
Franklin	Special	Reo Wolverine	Special
Garford, '20-'27	540 W.N. 1.25	Reo Mate	Special
Gardner, '20-'22	40 1.25	Republic, '20-'28	40 1.25
Gardner, '23-'24	41 1.25	Roamer, '23-'26	540 W.N. 1.25
Gardner, '25-'29	Special	Rollin, '23-'25	43 1.25



No. 43 (No. 51)



No. 44



No. 45

CAR	LIST AMMETER PRICE
Star 4, '21-'25	40
Star 4 and 6, '27, '28, '29	45
Scripps-Booth, '20	40
Scripps-Booth, '21-'22	42
Stearns-Knight 4 and 6, '20-'26	41
Stearns Light 6, Model 80, '24-'25	42
Sterling-Knight, '24-'25	41
Stephens, '20-'24	41
Stewart, '20-'25	40
Stewart, '29	42
Studebaker Big, Special and Light 6, '20-'24	41

CAR	LIST AMMETER PRICE
Studebaker, '24-'28	Special
Studebaker Commander, '29	55
Stutz, '23-'25	42
Stutz, '29	Special
Velie 50, Standard, '20-'25	41
Wills Ste. Claire, '23-'24	41
Willys-Knight 20-20A, '20-'28	41
Willys-Knight 65, '25	43
Willys-Knight 66, 70, '27	43
Willys-Knight 65, '20-'23	43
Willys-Knight 66B, '29	51
Willys-Overland T-103, '29	51

Ammeters marked Special are not made by us at the present time, but in many instances the No. 40, 41, or 42 may be used.

CHART SHOWING VARIOUS CARS TO WHICH EACH HOYT AMMETER IS ADAPTED

No. 40—\$1.25

Anderson, '20; Auburn 4 and 6, '20-'22; Atlas, '20-'21; Austin, '20-'21; Allen, '20; Begg, '20-'21; Bell, '20; Bour Davis, '20-'21; Briscoe, '20; Chandler, '20; Cleveland, '20-'21; Curtis, '20-'21; Denby Motor, '20-'21; Elcar, '20-'21; Gardner, '20-'22; Gramm, '20-'25; Haynes, '20; Jackson, '20-'21; Maxwell, '20-'22; Mitchell, '20-'21; Oakland, '20-'23; Oldsmobile, '20; Overland 4, '20; Pan American, '20-'21; Patriot, '25-'27; Piedmont, '20-'21; Republic, '20-'28; Scripps-Booth, '20; Security, '20-'21; Stanwood, '20-'21; Stewart, '20-'25; Texas, '20; Vogue, '20-'22.

No. 41—\$1.25

Concord, '26-'28; Durant, '20-'25; Flint 60 and 80, '20-'25; Flint Jr., '26-'27; Locomobile Jr. 8, '25; Studebaker Big, Special and Light 6, '20-'24; American, '20-'23; Apperson, '20; Auburn 4 and 6, '23-'24; Buick Standard, '22-'26 (Open and Closed Models); Buick Master 6, '22 (Open and Closed Models); Cadillac, '20-'21; Case, '20-'24; Chandler, '21-'23; Cleveland, '22-'23; Cole, '20-'25; DuPont, '24-'25; Elcar, '22-'25; Gardner, '23-'24; Gramm, '26-'28; H. C. S., '20-'24; Indiana Big, '26-'28; Jordan 6, '20-'23; Kissel 6, '20-'24; Lincoln, '23-'27; Luverne, '20-'27; Luxor Cab, '24-'27; McFarland, all models, '24-'26; Nash Jr. 8, '20-'23; Oldsmobile, '21-'23; Packard, '20-'23; Paige, '22-'24; Patterson, '22-'24; Peerless 72-90, '20-'23; Reo 6, '20-'26; Stephens, '20-'24; Stearns-Knight 4 and 6, '20-'26; Stearns Light 6, Model 80, '24-'25; Sterling Knight, '24-'25; Stutz, '23-'25; Velie Standard 50, '20-'25; Wills Ste. Claire, '23-'24; Willys-Knight 20-20A, '20-'28.

No. 42—\$1.25

Columbia, '20-'23; Essex, '20-'26; Haynes, '21-'24; Hudson, '20-'25; Hupmobile 4, '21-'25; Handley Knight, '20-'21; Jewell, '25; Lexington, '20-'26; Scripps-Booth, '21-'22; Stewart, '29.

No. 43—\$1.25

Overland 93, '24-'27; Overland Whippet 4 and 6, '26-'28; Rollin, '23-'25.

No. 44-A—\$0.60

Ford, '22-'25; Ford Model T (to '25).

No. 44—\$0.60

Ford Model T, '26-'27; Ford Model A, '28, '29, '30.

No. 45—\$1.25

Dodge, '27.

No. 47—\$0.60

Chevrolet, '25-'27; G. M. C. Speedwagon, '28.

No. 48—\$1.25

Essex, '27, and Hudson, '27-'28.

No. 49—\$1.25

Pontiac, '26-'27.

No. 53—\$1.50

Buick, '29; LaSalle, '29; Cadillac, '29.

No. 54—\$1.50

Pontiac, '29; Oakland, '29.

No. 55—\$1.25

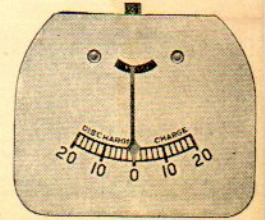
Studebaker Commander, '29.

No. 56—\$0.60

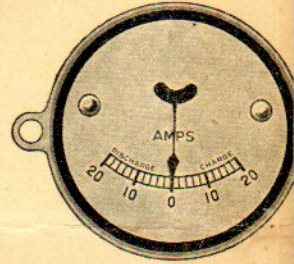
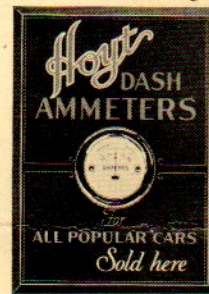
Chevrolet, '28-'29.

No. 540 W.N.—\$1.25

Buick Standard, '20-'21 (Open and Closed Models); Buick Master 6, '20-'21 (Open and Closed Models); Briscoe 34; Chevrolet, '20-'24; Commerce, '21-'26; Federal, '20, '26-'28; Garford, '20-'27; Gray, '23-'24; G. M. C., '25-'27; G. M. C., except Speedwagon, '28; Hupmobile 4, '20; Indiana, '20-'28; Jewell, '23-'24; Kearns, '20-'24; Roamer, '23-'26.



No. 56



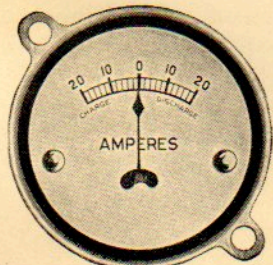
No. 55

A neat metal sign, 14 in. high, attractively lithographed in three colors, will gladly be furnished jobbers and dealers of Hoyt Ammeters.

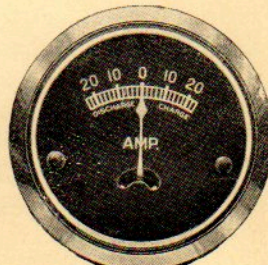
Dealers' Discount (Except 44, 44A, 47 and 56) 40% from List Price.

Dealers' Discount —44, 44A, 47 and 56—33 1/3 % from List Price.

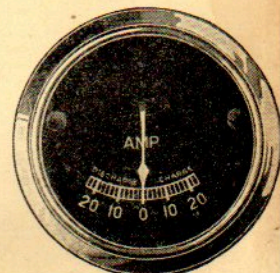
Canadian Prices 40% Higher than those shown above.



No. 52



No. 53



No. 54

Hoyt

AUTOMOBILE AMMETER ASSORTMENTS

Fits 80% of the Cars on the Road

Special Dealers' Assortment

and Counter Display of

Instrument Board Ammeters

In a handsome orange and blue carton for counter and showcase use, containing



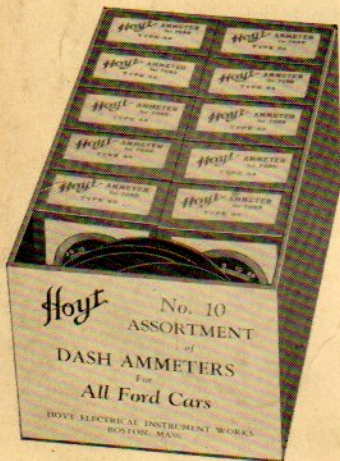
Fifteen Ammeters as Follows:

- 1 No. 40 Chevrolet and Overland, and Chandler. Buick (up to 1927), Jordan, Nash and others.
- 1 No. 42 Hudson and Essex (up to 1925) and Hupmobile.
- 1 No. 43 Overland and Whippet.
- 3 No. 44 Fords, with adapters to fit all models.
- 1 No. 45 Dodge '26-'27.
- 1 No. 47 Chevrolet '26-'27.
- 1 No. 48 Hudson '27-'28 and Essex '27.
- 1 No. 49 Pontiac and Oakland '26-'27.
- 1 No. 50 Hudson and Essex '28-'29.
- 1 No. 53 Buick '29, LaSalle '29, Cadillac '29.
- 1 No. 54 Pontiac and Oakland '29.
- 1 No. 55 Studebaker Commander '29.
- 1 No. 56 Chevrolet '28, '29.

Assortment No. 15

These Ammeters Fit Many Other Cars, Too. For Full Information See Directory on Reverse Side of this Sheet.

No. 15 Assortment—Dealers' Price, \$9.35 net (\$13.00 in Canada)
(Complete Assortment Totals \$15.70 at List Prices)



Hoyt No. 10 Ammeter Assortment

FOR ALL FORD CARS

The HOYT No. 10 Ammeter Assortment is an answer to a demand from the trade for a convenient method of handling replacement ammeters on all Ford cars. The Assortment is attractively boxed, clearly labelled and a convenient size to handle and ship. The assortment contains ten ammeters and five adapter rims, and will fit all models of Ford cars.

No. 10 Assortment—Dealers' Price, \$3.75
\$5.25 in Canada

HOYT ELECTRICAL INSTRUMENT WORKS