

HOYT

AUTOMOTIVE TEST EQUIPMENT

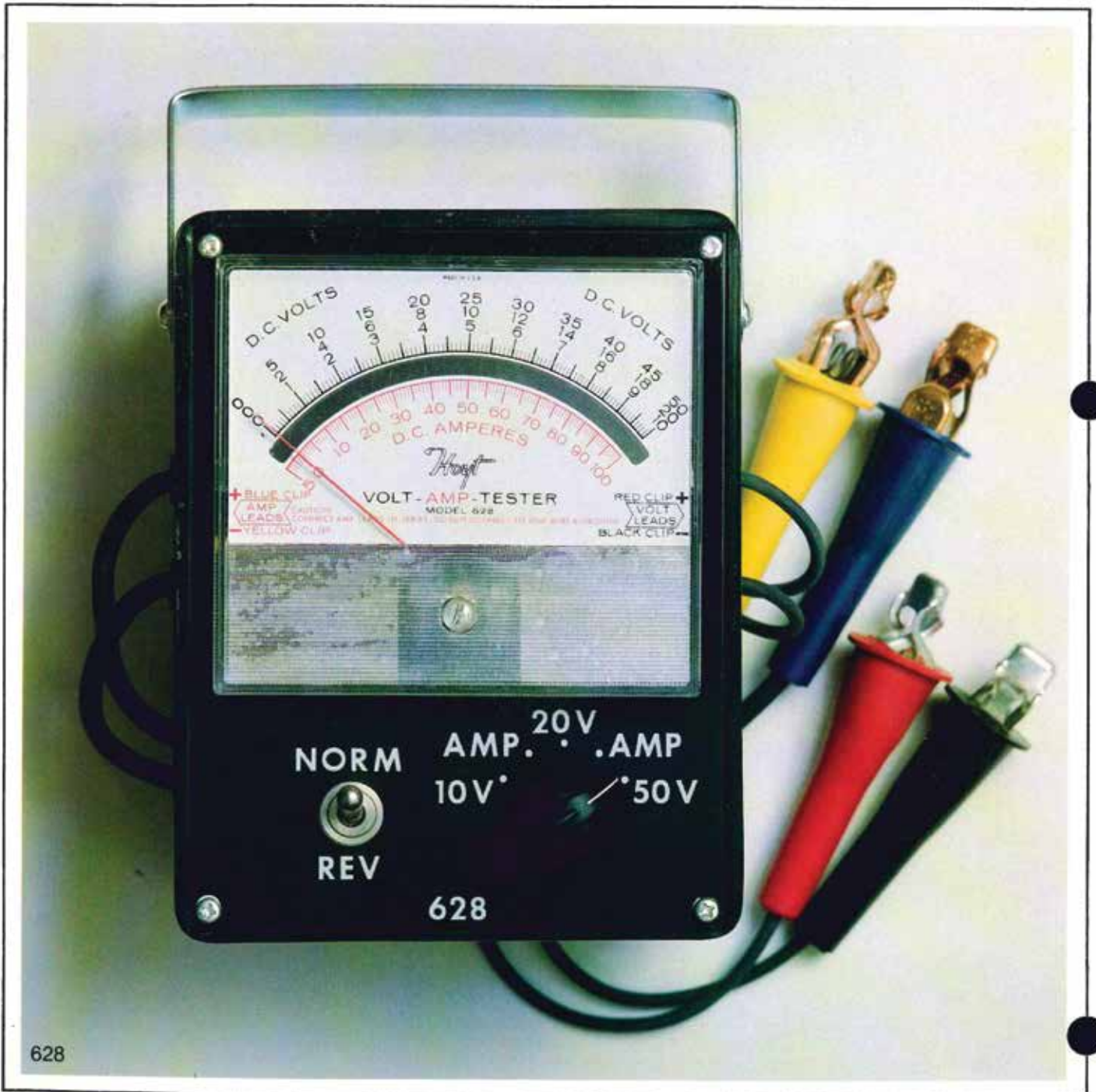
VOLTMETERS ■ AMMETERS
BATTERY TESTERS ■ MULTI-PURPOSE TESTERS



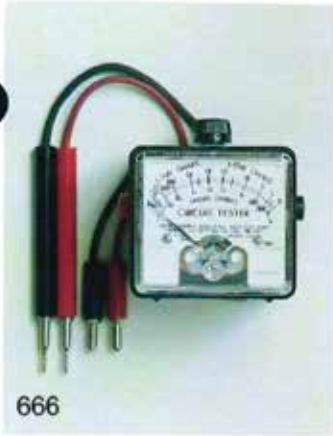
Hoyt Multi-Purpose Testers

± 2% ACCURACY

Model 628 Volt/Amp tester features: multi-range selector switch for testing volts and amps; scales for testing 6, 12, 24 and 32 volt systems; Ampere scale reads from 70/0/100 amps; switch for positive and negative polarity; heavy duty handle; overload protection.



628



666

Model 666
compact general purpose ohmmeter features: rugged phenolic case; low range 0-8,000 ohms; high range 0-500,000 ohms; jacks are provided for range selection.



GT-18

Model GT-18 shown
Volt Ammeter features: 0-18 volt DC scale; 5-0-60 Amp scale; switch for range selection; 3-foot heavy duty leads.

Model GT-36
Volt Ammeter features 0-36 volt DC scale; 5/0/80 Amp scale; switch for range selection tests all 6, 12 or 24 systems. Leather case available at extra cost.



676

Model 676
Volt/Amp tester for 6 or 12 volt systems features: overload protection; two position switch for ampere (0-60A) and voltage (0-18 DC) ranges; color coded clip insulators.



GT-3V1A

Model GT-3V1A
features 0-3 volt DC scale, 0-1 ADC amp scale; switch for range selection; 3-foot heavy duty leads. For use as an alternator rectifier tester.



630

Model 630 Ohmmeter for testing all automotive circuits and electrical components features: rugged phenolic case; dual range switch; low range from 25-5,000 ohms; high range from 0-500,000 ohms.



578V3-18

Model 578V3-18
features a dual scale for measuring 0-3 VDC and 0-18 VDC; includes heavy duty leads (not shown). Prime application for this unit is for precise measurements of battery voltage.

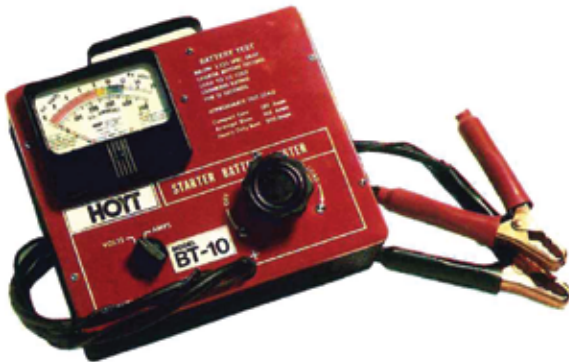


GT18-LC

Optional Leather Case
for portability. For use with the GT-18, GT-3V1A, 578V3-18.

Hoyt Battery Testers

FOR AUTOMOTIVE, TRUCKS, MARINE, RECREATION VEHICLES AND STATIONARY POWER PLANTS



BT-10 Multi-Purpose Battery Tester

The Hoyt BT-10 is an ideal self-contained portable tester for gas station or garage use where automotive sized batteries are tested. Its 5000 watt capacity coupled with a variable load, permits batteries to be checked to their specific requirements. The BT-10 is ideal for the new MAINTENANCE FREE batteries where an accurate load test is the only valid recognized test.

The variable carbon pile load gives precise drift free readings. The high load capacity results in stability, accuracy and maximum safety for testing different size batteries.

A large 4½" quality analog panel meter with a high impact cover, provides ±2% full scale accuracy and maximum readability within the dual ranges of 0-500 amps and 0-16 volts. A separate panel mounted switch selects volt or amp meter readings.

The BT-10 is enclosed in an expanded steel box for maximum ventilation designed and built to give years of dependable service.

The Model BT-10 will test the battery and starter to determine the amount of current draw in amperes.

The BT-10 will test the starter cable resistance and ground connections between battery and starter.

NEW

Hoyt BT-6/12 Multi-Purpose Battery Tester 6 or 12 Volt Systems

The Hoyt Model BT-6/12 Battery Tester is a professional quality instrument, which provides precise and rapid tests of battery conditions on or off the vehicle; all vehicle voltages such as head lights, tail lights, and other electrical devices, operation of the voltage regulator and alternator. It is also designed to detect faulty wiring, defective cables or connectors, and weak batteries.

One of the primary features of the BT-6/12 is the large 4½" quality analog panel meter, with a high impact phenolic case. The meter provides ±2% full scale accuracy—and yields maximum readability of both 6 and 12 volt ranges.



BT-6/12

The BT-6/12 is enclosed in a ribbed steel box for maximum ventilation, and designed to give years of dependable service. The case, compact in size, features a large carrying handle. This model does not require additional power sources for portable field testing. The over-all dimensions are 8½" high, 7" deep, and 6¼" wide. Two separate push-buttons on the face of the panel allow you to select either the 6 volt or the 12 volt range. The heavy duty flexible cables with heavy duty clamps allows for a secure grip to the battery post. The clamps have insulated grips and are color coded for both positive and negative connections.



655

Model 655 Battery Condition Tester

For use in testing batteries with top terminal and exposed top straps. Reads to 1/100th of a volt. Makes open circuit test, load test with starter and checks voltage regulator. Rugged Hoyt precision meter movement, 3½" chrome case with convenient hanger on case back, 4½-foot coiled cord and rubber cushioned adjustable prod, 2½" to 4½" span, tests any size battery cell.



665

Model 665 Cadmium Cell Tester

Multi-purpose voltmeter with three ranges (.3/0/3, 0-9, and 0-18 Volts) for testing batteries, generators, alternators and electrical systems. Dial is designed for illustrating cadmium test. Cadmium stick and holder available as an option.



Cadmium Stick and Holder for Models 665 and 677 is an available option for making a cadmium test.



671

Model 671 Battery & Cell Condition Tester

Universal tester to check batteries in stock or on charge. Unique negative insulated probe with coiled cord is designed for maximum operation.

- Tests battery under load with started engaged
- Selector switch on rear of case allows either single cell test or the complete battery
- Meter indicates charging operation of alternator, generator or regulator
- Upper scale reads 9.5 to 15.7 Volts with readability to 5/100 of a volt
- Lower scale reads 1.6 to 2.625 Volts with readability to 1/100 of a volt.



677

Model 677 Multi-Purpose Voltmeter For use in testing all types of automotive and marine applications. Insures simplicity for inspecting electrical circuits such as lights, voltage regulators, generators, alternators and other devices requiring a voltage drop. Also will test batteries for present condition. Dual scales allow the maximum readability of batteries (0-18 Volts) and for much smaller readings (.3/0/3 Volts) for circuit testings. Cadmium stick and holder available as an option.

Hoyt Ammeters and Voltmeters

HEAVY DUTY ALTERNATORS ± 2% ACCURACY



C-8033

C-8033 Shunt mounted on a phenolic block is supplied with all ammeters. Shunt is easily mounted for installation near alternator.



670-100AA

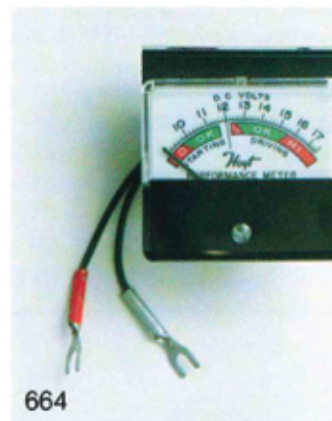
Models 670-100AA (100/0/100) shown, and 670-200AA are illuminated ammeters supplied with mounting bracket and shunt with 36" leads.



694

Model 694 DC Ammeter is a 2" meter with a 250° illuminated dial. Unit has range of 150/0/150 Amperes DC. External shunt mounted on phenolic block with 3-foot leads for mounting on or under dash is included.

Also available:
 698 75/0/75 ADC
 697 100/0/100 ADC
 696 200/0/200 ADC
 692 300/0/300 ADC



664

Model 664 Illuminated Voltmeter utilizes compact case and mounting bracket for permanent under dash mounting. Detects electrical signals such as overcharging, high voltage, faulty alternators or generators, starter voltage or a weak battery condition.



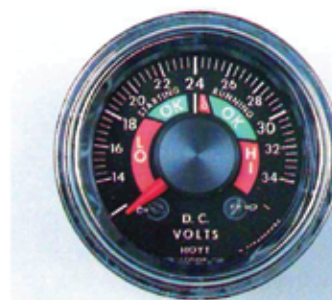
17-3AA



LE-4B

LE-4B Bracket (B-1965-A): For any flush mounting meters with a 2.20" diameter barrel, such as 17/3 AA, 17/3 BB.

Models 17-3AA (100/0/100) shown, 17-3BB (150/0/150), 17-3CC (200/0/200) are 2% moving coil meters designed for heavy duty charging systems. Separate insulated shunt is mounted near alternator and supplied with 36" leads so meter can be mounted on or under dash. For under dash mounting use LE-4B bracket.



691

Models 695 & 691 DC Voltmeters are 2" panel meters with 250° illuminated dials, units have a suppressed range of 6-18 volts or 14-34 volts with maximum readability of 12 or 24 volt systems for checking starting conditions under load and general operating conditions.



695

Hoyt Center Zero Ammeters

2 1/2" AMMETERS—5% ACCURACY



Models 90 (30/0/30) shown and **91** (60/0/60) are equipped with high-visibility scale, high impact plastic fronts or covers with metal base for extreme ruggedness, U-clamp mounting, 3/4" long terminals.



793-F8



693-F8

Models 693-F8 (0-8 Amps) shown **693-F75** (0-75 Amps), and **693-F100** (0-100 Amps) are rectangular flush mounted replacement meters for most battery chargers.

Models 793-F8 (0-8 Amps) shown **793-F15** (0-15 Amps), and **793-F100** (0-100 Amps). Rectangular panel meters with clear plastic fronts will replace meters for most battery chargers, U-clamp mounted.



44-20

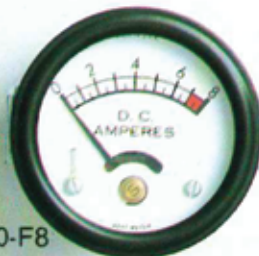
Round Panel Adaptor (B-2947)

LE-2 Bracket (B-1661)

Models 44-20 (20/0/20) and **44-30** (30/0/30) are "Ford" type direct reading ammeters for the 1926 and 1927 Model T and the 1928 and 1931 Model A. **44-50** (50/0/50) ammeter is supplied for newer type alternator systems. Available with adapter brackets.



640-S8



640-F8

Models 640-F8 shown (0-8 Amps) and **640-F15** (0-15 Amps) are round flush-type meters normally supplied with most battery chargers. Available in flush or surface case, supplied with U-clamp mounting for 2 1/16" hole diameter.

Models 640-S8 (0-8 Amps) shown and **640-S15** (0-15 Amps) are surface mounted replacement meters for most battery chargers.



77

Models 77 shown, **41**, **42**, **85** and **86** are direct reading ammeters with white lettering on black background for maximum readability. Supplied with flush mounted polished rim cases which fit a 2 1/16" hole diameter. U-clamp mounting for quick insertion into a panel.

41: 20/0/20 Amps

42: 30/0/30 Amps

77: 60/0/60 Amps

85: 80/0/80 Amps

86: 100/0/100 Amps




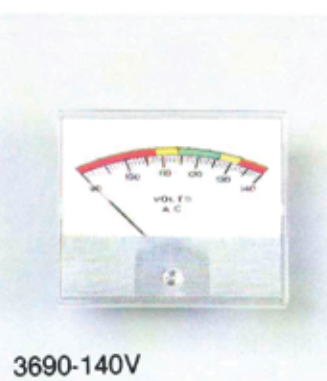
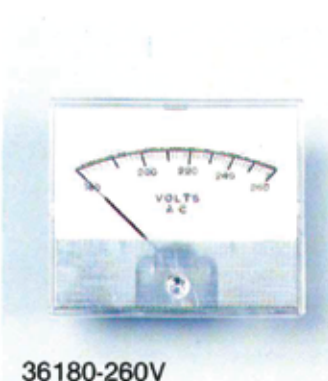





LE-3 Bracket (C-7397) For any flush mounting meters with a 2 1/16" diameter barrel, such as 640-F8, 640-F15, 41, 42, 77, 85, 86, 90, 91.

640 Round Bracket Adapter (A-6483)

For mounting 640 narrow flush meters such as 640-F8, 640-F15, 41, 42, 77, 85, 86, 90, 91, into an over-sized hole.

Marine Instrumentation

 <p>562R</p>	<p>Model 562R is an AC voltage tester with a range of 0-260 Volts. This unit is an excellent tester of 120, 208, 240 Volt AC systems. The voltmeter is supplied with a 3% moving coil movement and rectifier, 4 foot cord, rubber coated prod and alligator clip.</p>	 <p>658R-120</p>	<p>Model 658R-120 is a power line sentinel with a range of 100-140 Volts AC. This portable unit is a free-standing phenolic case with mounting feet. The voltmeter is supplied with a 3% moving coil movement and rectifier.</p>
 <p>3510-16V</p>	<p>Model 3510-16V is a 3½ DC voltmeter used for 12 Volt systems. Multi-colored 10-16 Volt scale shows condition of battery and charging systems. Meter may be mounted on a panel surface or bezel mounted for easy installation. A 2% suppressed moving coil movement is used for 1/10th of a volt readings.</p>	 <p>3690-140V</p>	<p>Model 3690-140V is a 3½ AC voltmeter used for 120 Volt systems. Multi-colored 90-140 Volt scale shows condition of auxiliary power and generator systems. Meter may be surface or bezel mounted on a panel. Meter is supplied with a 3% moving coil movement and rectifier for accurate readings.</p>
 <p>36180-260V</p>	<p>Model 36180-260V is a 3½ AC voltmeter used for 208, 220 or 240 Volt systems. Meter is used for monitoring auxiliary power or ship to shore power. Meter may be surface or bezel mounted and has a 180-260 Volt 3% suppressed moving coil movement and rectifier.</p>	 <p>350-100A</p>	<p>Model 350-100A is a 3½ Ammeter available in either AC or DC. Various ranges are available depending on requirements. External shunt or current transformer must be ordered as a separate item. A 2% AC repulsion or 2% DC moving coil movement is supplied.</p>
 <p>C-8033</p>	<p>C-8033 Shunt mounted on a phenolic block. Available in 100, 150, 200, 300 Amperes with a 50 millivolt DC output. Easy installation.</p>		<p>Current Transformer Round current transformer with 5 Amperes output. Available from 50-600 Amps depending on your requirement.</p>

Hoyt Current Indicators

INDUCTION TYPE

All indicators on this page are Induction Type which require only that the cable be placed in slot frame on rear or case. No electrical connections or leads to hook up.



SG-1* Dual Starter Generator Current Indicator features dual ranges of 75-0-75 Amps DC and 600-0-600 Amps DC. Tester is utilized on any 6, 12, 24 or 32 Volt DC electrical system for any vehicle.

Models 663* shown and 699 Generator Current Indicators inexpensive ammeters for measuring direct current up to 100 Amps. Readability of 5 Amperes.
663: 75/0/75 Amps DC
699: 100/0/100 Amps DC



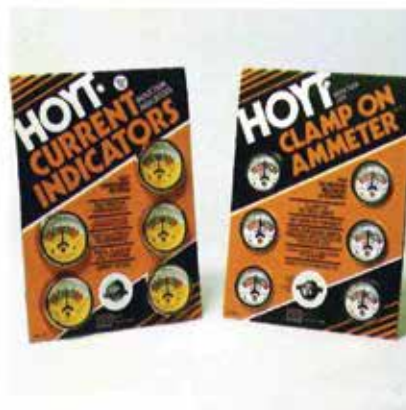
Model 763* Induction Ammeter. Ideal for checking low current applications such as the accessories to the electrical system. Also useful for checking grounds and low voltage leaks.

Model 764* Clamp-On Ammeters. Induction ammeters are easily applied to battery cable. Indicates full charge rate up to 60 Amps, normal charge rate of 10 Amps DC, current loss of ignition and accessories. Suited for cars, boats and do-it-yourself market.



652

Models 652* shown, 627* and 629* Starter Current Indicators. Low-cost indicators for measuring approximate current drawn by starter of any engine. Also will indicate bad brushes in starter and condition of armature.
627: 400/0/400 Amps DC
629: 600/0/600 Amps DC
652: 1000/0/1000 Amps DC (designed for diesel trucks and welders)



Display Cards
*Available on display cards as shown. Indicate display cards when ordering.

Hoyt DC Voltmeters FOR ELECTRICAL SYSTEMS



ABV-1



ABV-30

Models ABV-1 and ABV-30 illuminated voltmeters are designed for 12 or 24 volt systems. U-clamp bracket allows ease of mounting. Multi-colored dial on ABV-1 has a range of 4 to 15 Volts. A multi-colored dial of 0-30 Volts is on the ABV-30. Reads starting and charging voltages of ignition and light electrical systems continually while engine is operating.



AGB-1



AGB-30

Models AGB-1 and AGB-30* are 2½" meters in metal case with heavy-duty rubber coated leads and alligator clips. Maximum readability and accuracy of 5%. AGB-1 for 6, 12 or 18 volt systems. AGB-30 for 6, 12 or 24 volt systems. For quick check of batteries, generators, alternators and regulator systems of either 6 or 12 volts; testing headlights, taillights, starters and various electrical accessories.



CA-1

Model CA-1 meter is used for testing the electrolyte in any wet cell battery. Dial has a range of 2.2/0.2 Volts. Unit is equipped with a pair of 2 foot leads with cadmium plated, insulated probes.



CG-1

Model CG-1* is designed to plug into a cigarette lighter for testing battery and alternator voltages. Dial has an expanded scale reading from 4-15 Volts DC for checking 6 and 12 volt systems. Battery and charging conditions under load can be read while engine is running.

Display Card

*Available on display cards as shown. Indicates display card when ordering.



Pyrometers and Tachometers

FOR THE AUTOMOTIVE INDUSTRY

Model R606 Pyrometer

Standard 3" mounting hole and has illumination for night use. The large size of these Pyrometers allows easy reading of the 250° sweep 0-1800°F scale. Available with 6, 10 or 14 ft leads. Includes thermocouple and instructions.

R606-6 kit w/6 ft leads
R606-10 kit w/10 ft leads
R606-14 kit w/14 ft leads



R606

Model R607 Pyrometer

will fit any standard 2" panel mounting hole and have illumination for night use. Due to their small size, two of them can be used for V-8 engine applications. Pyrometer features a full 250° sweep on a 0-1800°F scale. Available with 6, 10 or 14 ft leads. Includes thermocouple and instructions.

R607-6 kit w/6 ft leads
R607-10 kit w/10 ft leads
R607-14 kit w/14 ft leads

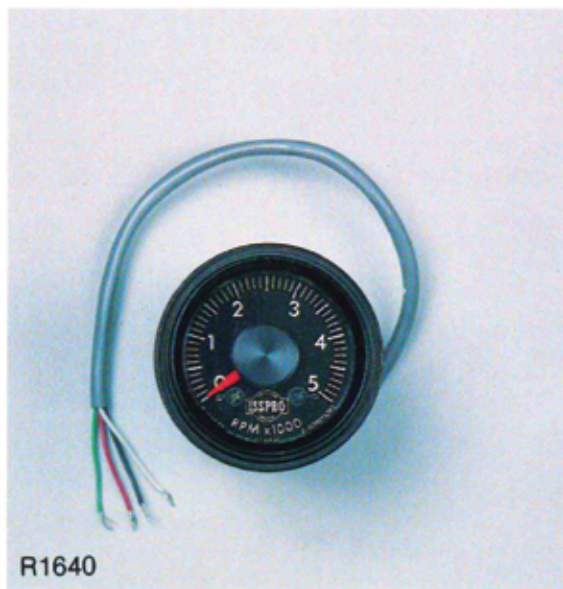


R607

R1640 2" Diesel Tachometer

For small diesels, designed for easy installation with $\pm 2\%$ accuracy. Sensor installation is accomplished by gluing 2 magnets to front engine pulley and mounting sensor to pan bolt. It's that easy! Tachometers can be used for either Ford/IH 6.9 liter or GM 6.2 liter. Tachometer kit complete with sensor.

R1640-1 Tach kit for Ford/IH 6.9 liter
R1640-2 Tach kit for GM 6.2 liter



R1640

HOYT Automotive Test Equipment



BT-10

Model BT-10

The Hoyt BT-10 is an ideal self-contained portable tester for gas station or garage use where automotive sized batteries are tested. Its 5000 watt capacity coupled with a variable load, permits batteries to be checked to their specific requirements. The BT-10 is ideal for the new MAINTENANCE FREE batteries where an accurate load test is the only valid recognized test.



628

Model 628 Volt/Amp Tester

features: multi-range selector switch for testing volts and amps; scales for testing 6, 12, 24 and 32 volt systems; Ampere scale reads from 70/0/100 Amps; switch for positive and negative polarity; heavy duty handle; overload protection.



GT-18

Model GT-18 Volt Ammeter

features: 0-18 Volt DC scale; 5-0-60 Amp scale; switch for range selection; 3 foot heavy duty leads. Leather case available at extra cost.



665

665 Cadmium Cell Tester

Multi-purpose voltmeter with three ranges (.3/0/3, 0-9 and 0-18 Volts) for testing batteries, generators, alternators and electrical systems. Dial is designed for illustrating cadmium test.

Hoyt manufactures a complete line of automotive equipment for the automotive industry including load testers, Ammeters, Voltmeters, Ohmmeters, multi-purpose testers and induction Ammeters. If a panel meter is needed, fill out the card on the back side of this page and we will send you a panel meter catalog featuring our complete line of panel meters.

TERMS AND CONDITIONS

Terms: Net 30 Days.

Freight: Prepaid to jobbers on shipments of \$250 or more to a single destination within the U.S.A., otherwise FOB: Penacook, NH.

Invoice Minimum: \$50

Warranty: These products are warranted to be of good workmanship and quality and to be free from defects in manufacture. The manufacturer's liability is limited to repairing such defects provided the product is returned prepaid to the Service Division, Hoyt Electrical Instrument Works, Inc., Penacook, NH, within one year after delivery to the original purchaser. The manufacturer shall not be liable for consequential damages. This warranty is in lieu of all other warranties, guaranties, liabilities or obligations, statutory or implied, to the original purchaser or to any other person.

Prices and specifications, including colors and materials are subject to change without notice. Products may be withdrawn at anytime at the option of the manufacturer. Catalog photographs are for reference only.

HOYT

HOYT ELECTRICAL INSTRUMENT WORKS, INC.
19 LINDEN STREET • P.O. BOX 6183
PENACOOK, NEW HAMPSHIRE 03303
(603-753-6321)

REPRESENTED BY: