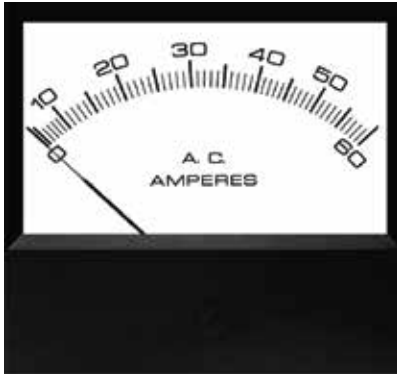




Models 4035, 4036

Analog Panel Meters



- 3-1/2" 4035** DC Moving Coil
- 3-1/2" 4036** AC Repulsion

Features

- Handsomely styled to meet the most demanding appearance requirements.
- 4 hole mounting to provide for interchanging with other similar size meters.
- UL Recognized meters available.
- Special Dials are available with the following options: additional Colors, Scales, Special Legends, Logo and Mirrors.
- **DC Ranges:** Microammeter, Milliammeter, Ammeter, Millivoltmeter, Voltmeter.
- **AC Ranges:** Milliammeter, Ammeter, Voltmeter, Frequency Meter, Motor Load Meter.

Specifications

- Overload:** Voltmeters (AC and DC): 50% momentary; 20% sustained.
Ammeters (AC and DC): momentary - 10 X rated current, 10 consecutive intervals of 1/2 second with a 1 minute interval between successive applications; sustained - 20% for 6 hours.
- Accuracy:** ±2% full scale value.
- Resistance:** ±15%.
- Dials:** 100 or 90 degree arc, black lettering on white background. Special dial colors and artwork are available as an option.
- Pointer:** Knife Edge
- Movement:** Pivot and Jewel, AC Iron Vane or Taut Band.
- Mounting:** Specify (S) Surface mount.
- Case:** Bakelite.
- Operating Temp.:** 32°F to 104°F (0°C to 40°C).
- Storage Temp.:** -4°F to 131°F (-20°C to 55°C).
- Meter Approvals:** ANSI C39.1, RoHS, REACH.
- Origin:** Made in USA.

Dimensions

