


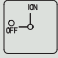

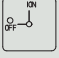



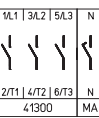
On-Off Switch 20A-125A

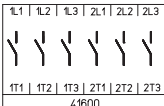
Disconnect Switches

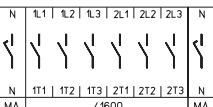


Base mounting switches with snap-on mounting
for DIN rail
3 up to 4 pole
20 A up to 125 A
IP30

Switching programme	Rated data (IEC 60947)			Escutcheon dimension for 45 mm aperture in Panel/Distribution boards (H × W) (mm)	M-handle silver/black	N-handle silver/grey	
	Operat. current I _n	Operational power (at 380–440 V)			 	 	
	AC-21A (A)	AC-23A (kW)	AC-3 (kW)		IP30	IP30	
					Order code number	Order code number	
41300 – 3 pole – without auxiliary contacts 	20	5.5	3.7	45 × 48	H216-41300-026M1	H216-41300-026N2	
	20	5.5	3.7	45 × 60	H216-41300-126M1	–	
	25	7.5	5.5	45 × 48	H220-41300-026M1	H220-41300-026N2	
	25	7.5	5.5	45 × 60	H220-41300-126M1	–	
	32	11	7.5	45 × 48	H226-41300-026M1	H226-41300-026N2	
	32	11	7.5	45 × 60	H226-41300-126M1	–	
	40	15	11	45 × 48	H233-41300-026M1	H233-41300-026N2	
	40	15	11	45 × 60	H233-41300-126M1	–	
	40	15	11	45 × 52.5	B240-41300-026M1*	B240-41300-026N2*	
	50	18.5	15	45 × 52.5	B250-41300-026M1	B250-41300-026N2	
	63	22	18.5	45 × 52.5	B263-41300-026M1	B263-41300-026N2	
	63	22	18.5	45 × 72	H406-41300-126M1*	–	
	80	30	22	45 × 72	H408-41300-126M1	–	
100	37	30	45 × 72	H410-41300-126M1	–		
125	45	37	45 × 72	H412-41300-126M1	–		

41400 – 4 pole – without auxiliary contacts – neutral contact early make/late break 	20	5.5	3.7	45 × 48	H216-41400-026M1	H216-41400-026N2	
	20	5.5	3.7	45 × 60	H216-41400-126M1	–	
	25	7.5	5.5	45 × 48	H220-41400-026M1	H220-41400-026N2	
	25	7.5	5.5	45 × 60	H220-41400-126M1	–	
	32	11	7.5	45 × 48	H226-41400-026M1	H226-41400-026N2	
	32	11	7.5	45 × 60	H226-41400-126M1	–	
	40	15	11	45 × 48	H233-41400-026M1	H233-41400-026N2	
	40	15	11	45 × 60	H233-41400-126M1	–	
	40	15	11	45 × 52.5	B240-41400-026M1*	B240-41400-026N2*	
	50	18.5	15	45 × 52.5	B250-41400-026M1	B250-41400-026N2	
	63	22	18.5	45 × 52.5	B263-41400-026M1	B263-41400-026N2	
	63	22	18.5	45 × 72	H406-41400-126M1*	–	
	80	30	22	45 × 72	H408-41400-126M1	–	
100	37	30	45 × 72	H410-41400-126M1	–		
125	45	37	45 × 72	H412-41400-126M1	–		

Switching programme	Rated data (IEC 60947)			Escutcheon dimension for 45 mm aperture in Panel/Distribution boards (H × W) (mm)	M-handle silver/black IP30 Order code number
	Operat. current I _e (A)	Operational power (at 380–440 V) (kW)			
41600 – 6 pole – without auxiliary contacts 	20	5.5	3.7	45 × 76	H216-41600-026M1
	25	7.5	5.5	45 × 76	H220-41600-026M1
	32	11	7.5	45 × 76	H226-41600-026M1
	40	15	11	45 × 76	H233-41600-026M1
	40	15	11	45 × 105	B240-41600-026M1*
	50	18.5	15	45 × 105	B250-41600-026M1
	63	22	18.5	45 × 105	B263-41600-026M1
	63	22	18.5	45 × 72	H406-41600-126M1*
	80	30	22	45 × 72	H408-41600-126M1
	100	37	30	45 × 72	H410-41600-126M1
	125	45	37	45 × 72	H412-41600-126M1

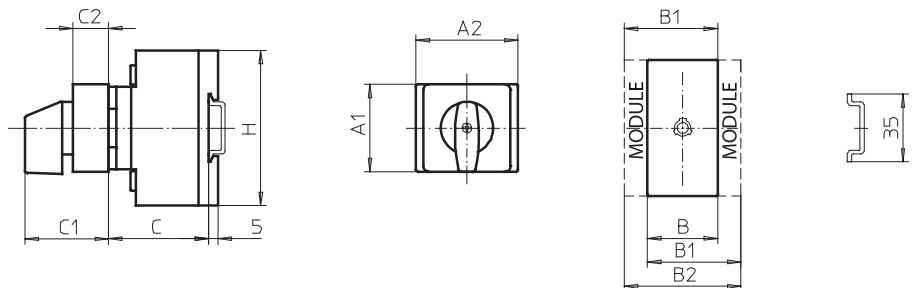
41800 – 8 pole – without auxiliary contacts – 2 neutral contacts early make/late break 	20	5.5	3.7	45 × 76	H216-41800-026M1
	25	7.5	5.5	45 × 76	H220-41800-026M1
	32	11	7.5	45 × 76	H226-41800-026M1
	40	15	11	45 × 76	H233-41800-026M1
	40	15	11	45 × 105	B240-41800-026M1*
	50	18.5	15	45 × 105	B250-41800-026M1
	63	22	18.5	45 × 105	B263-41800-026M1
	63	22	18.5	45 × 72	H406-41800-126M1*
	80	30	22	45 × 72	H408-41800-126M1
	100	37	30	45 × 72	H410-41800-126M1
	125	45	37	45 × 72	H412-41800-126M1

Dimensions (mm)

Setup of order code number

Type	Switching progr.	Mtg. form
H220	41400	026M1

Order code no. H220-41400-026M1



Switching programmes 3 and 4 pole

Types H216 / H220 / H226 / H233:

Mtg. form	A1	A2	B	B1	B2	C	C1	C2	H
026M1	45	48	36	48	60	38	45	18.5	70
026N2	45	48	36	48	60	38	45	18.5	70
126M1	45	48	36	48	60	38	45	18.5	70

Types B240 / B250 / B263:

Mtg. form	A1	A2	B	B1	B2	C	C1	C2	H
026M1	45	52.5	50	69	88	38	40	18.5	72
026N2	45	52.5	50	69	88	388	40	18.5	72

Types H406 / H408 / H410 / H412:

Mtg. form	A1	A2	B	B1	B2	C	C1	C2	H
126M1	45	72	70	89	108	55	48	16	80

Switching programmes 6 and 8 pole

Types H216 / H220 / H226 / H233:

Mtg. form	A1	A2	B	B1	B2	C	C1	C2	H
026M1	45	76	72	84	96	40	51.5	25.5	72

Types B240 / B250 / B263:

Mtg. form	A1	A2	B	B1	B2	C	C1	C2	H
026M1	45	105	100	119	138	40	51.5	25.5	72

Types H406 / H408 / H410 / H412:

Mtg. form	A1	A2	B	B1	B2	C	C1	C2	H
126M1	45	72	140	159	178	67	48	16	80