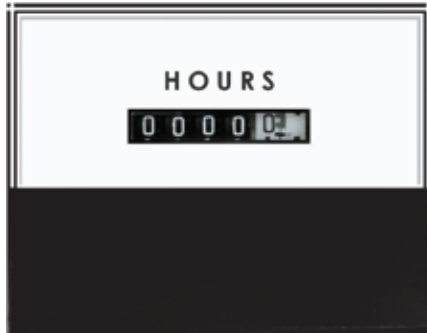




312, 313 Series

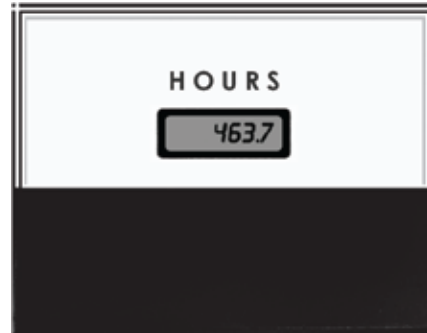
Elapsed Time Meters

2-1/2" 312 HRM
3-1/2" 313 HRM



Mechanical

2-1/2" 312 HRD
3-1/2" 313 HRD



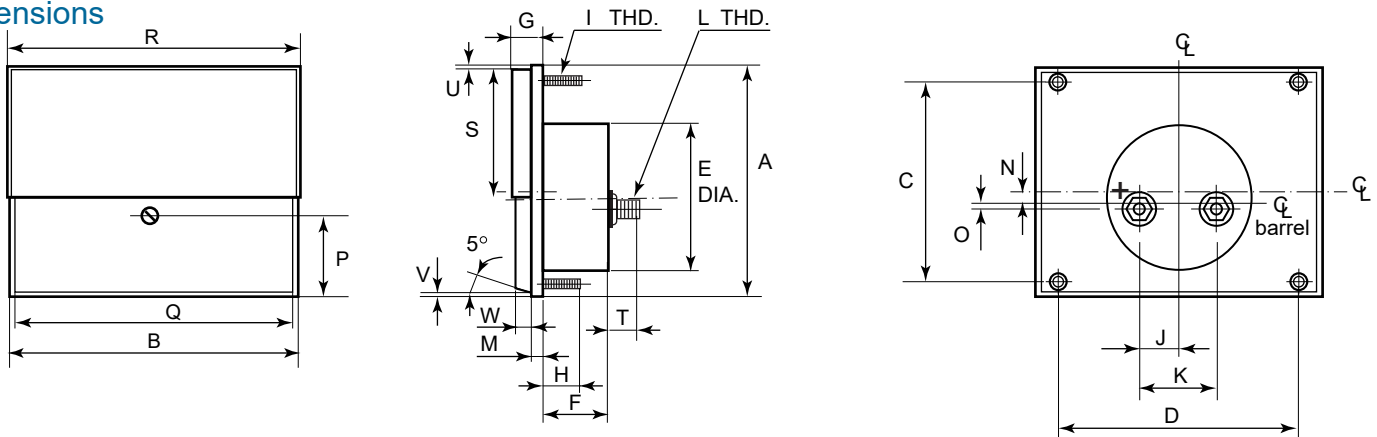
LCD Digital

All meters available to operate 120, 240 VAC, 50 or 60 Hertz.
Special Dials are available with the following options: Additional Colors, Scales, Special Legends, Logo and Mirrors.

Specifications

Accuracy: Matches frequency control of power $\pm 1\%$ Quartz accuracy.
 Display: Easy to read 10,000 or 100,000 hour numeric display.
 Mounting: Specify (S) Surface mount, (B) Bezel mount or (W) Window mount.
 Case: Lexan case construction, brass terminal studs.
 Operating Temperature: -25° to 185°F (-32° to 80°C).
 Power Rating: 0.6 watts.
 Vibration Shock: Meets ANSI C39.1.

Dimensions



| Models | A | B | C | D | E | F | G | H | I | J | K | L | M | N | O | P | Q | R | S | T | U | V | W |
|---------|------|------|------|------|------|------|------|------|------|------|------|-------|------|------|------|------|------|------|------|------|------|------|------|
| 312 HRM | 2.29 | 2.99 | 1.88 | 1.88 | 2.08 | 2.16 | 0.40 | 0.50 | 4-48 | 0.48 | 0.97 | 10-32 | 0.16 | 0.00 | 0.00 | 0.86 | 2.89 | 2.91 | 1.23 | 0.50 | 0.06 | 0.04 | 0.19 |
| 312 HRD | 2.29 | 2.99 | 1.88 | 1.88 | 2.08 | 1.16 | 0.40 | | | | | | 0.16 | | | | | | | | | | |
| 313 HRM | 2.89 | 3.70 | 2.25 | 2.25 | 2.60 | 2.16 | 0.42 | | | | | | 0.18 | | | | | | | | | | |
| 313 HRD | 2.89 | 3.70 | 2.25 | 2.25 | 2.60 | 1.16 | 0.42 | | | | | | 0.18 | | | | | | | | | | |